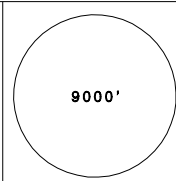


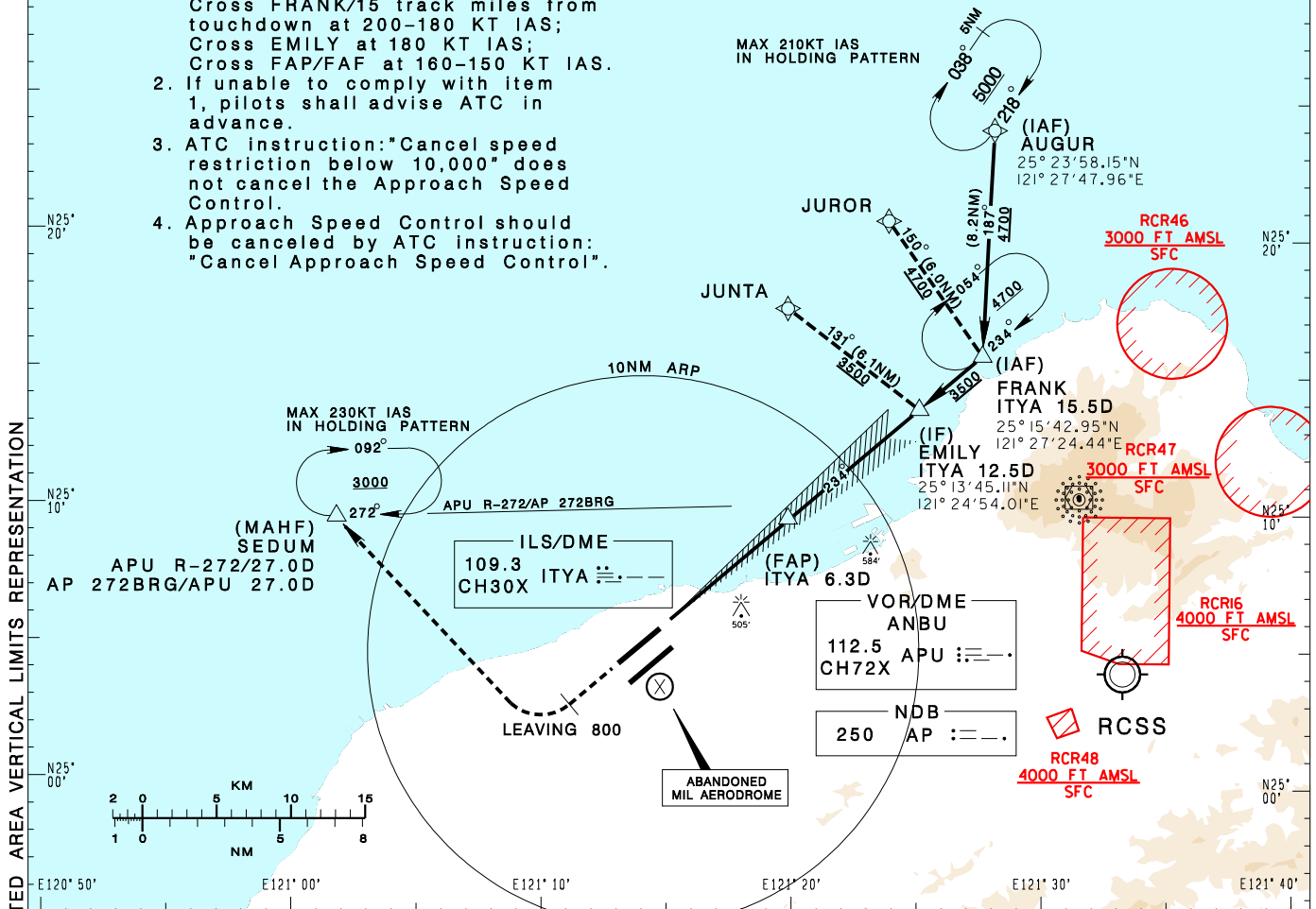
臺灣桃園國際機場
TAIPEI/TAIWAN TAOYUAN INTL AD

RCTP
ILS RWY23R

TAIPEI APP 125.1 128.5 125.6	TAIPEI TWR 118.7 129.3	ATIS 127.6	 <p>VAR 5° W</p> <p>MSA ARP 25NM</p>	
Apt Elev: 108'	Rwy23R THR Elev: 63'	Trans Level: FL130		Trans Alt: 11,000'
BEARINGS ARE MAGNETIC; DISTANCES ARE NAUTICAL MILES; ELEVATIONS, HEIGHTS IN FEET				

APPROACH SPEED CONTROL

- Unless otherwise instructed by ATC, pilot should follow the following speed control:
Cross FRANK/15 track miles from touchdown at 200-180 KT IAS;
Cross EMILY at 180 KT IAS;
Cross FAP/FAF at 160-150 KT IAS.
- If unable to comply with item 1, pilots shall advise ATC in advance.
- ATC instruction: "Cancel speed restriction below 10,000" does not cancel the Approach Speed Control.
- Approach Speed Control should be canceled by ATC instruction: "Cancel Approach Speed Control".



MISSED APCH:
CLIMB ON HDG 234 UNTIL
LEAVING 800, THEN TURN
RIGHT DIRECT TO SEDUM,
MAINTAIN 3000 AND HOLD.

GP 3°
RDH 50

NM FROM ITYA

MINIMA (OCA IN FT, VIS IN M, OCH IN FT)

CATEGORY	A	B	C	D
STRAIGHT IN	263 ⁸⁰⁰ _{RVR550} 200	270 ⁸⁰⁰ _{RVR550} 207	278 ⁸⁰⁰ _{RVR550} 215	288 ⁸⁰⁰ _{RVR550} 225
STRAIGHT IN (TDZ/CL LGT OUT)	263 ⁸⁰⁰ _{RVR750} 200	270 ⁸⁰⁰ _{RVR750} 207	278 ⁸⁰⁰ _{RVR750} 215	288 ⁸⁰⁰ _{RVR750} 225
STRAIGHT IN (ALS OUT)	263 ¹²⁰⁰ _{RVR1200} 200	270 ¹²⁰⁰ _{RVR1200} 207	278 ¹²⁰⁰ _{RVR1200} 215	288 ¹²⁰⁰ _{RVR1200} 225
CIRCLING	880/1900 772	930/2800 822	1030/4400 922	1030/4800 922

NOTE
1. CIRCLING NOT AUTHORIZED SOUTHEAST OF RWY 05R/23L.
2. ATS SURVEILLANCE REQUIRED FOR AUGUR TO FRANK AND MISSED APCH SEGMENTS.

*DME REQUIRED.

CHANGES: NEW PAGE NUMBER, UPDATE RESTRICTED AREA, VERTICAL LIMITS REPRESENTATION